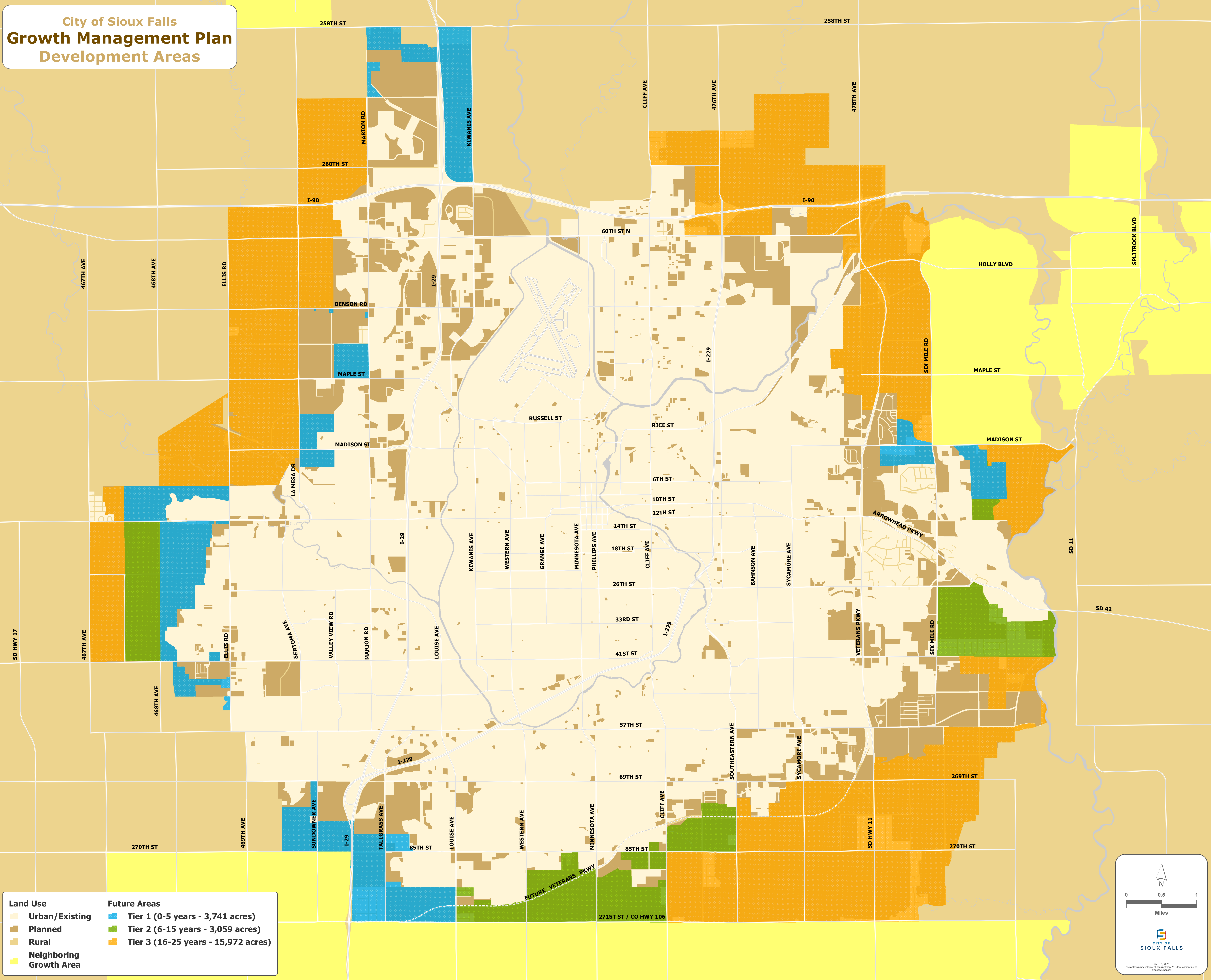


City of Sioux Falls
Growth Management Plan
 Development Areas



Land Use	Future Areas
Urban/Existing	Tier 1 (0-5 years - 3,741 acres)
Planned	Tier 2 (6-15 years - 3,059 acres)
Rural	Tier 3 (16-25 years - 15,972 acres)
Neighboring Growth Area	

North arrow pointing up.

Scale bar: 0 to 1 Miles.

CITY OF SIOUX FALLS

March 8, 2023
 map/planning/development planning/23 - development areas
 project changes