



CITY OF  
SIOUX FALLS

Planning and Development Services

February 7, 2024

# Shape Sioux Falls Comprehensive Plan

- Adopted Plan in 2009, 2016; and amended maps in 2019, 2022, 2023...
- “The map should be updated each year to keep the citizens and development community updated as to the areas of the city that are available for urban services and development of the Growth Management Policy Framework.

For growth management to be successful, policies guiding the provision of urban services are needed. The growth management policy framework is intended to focus and direct the actions of the City into a consistent, workable growth management approach. “ p. 28

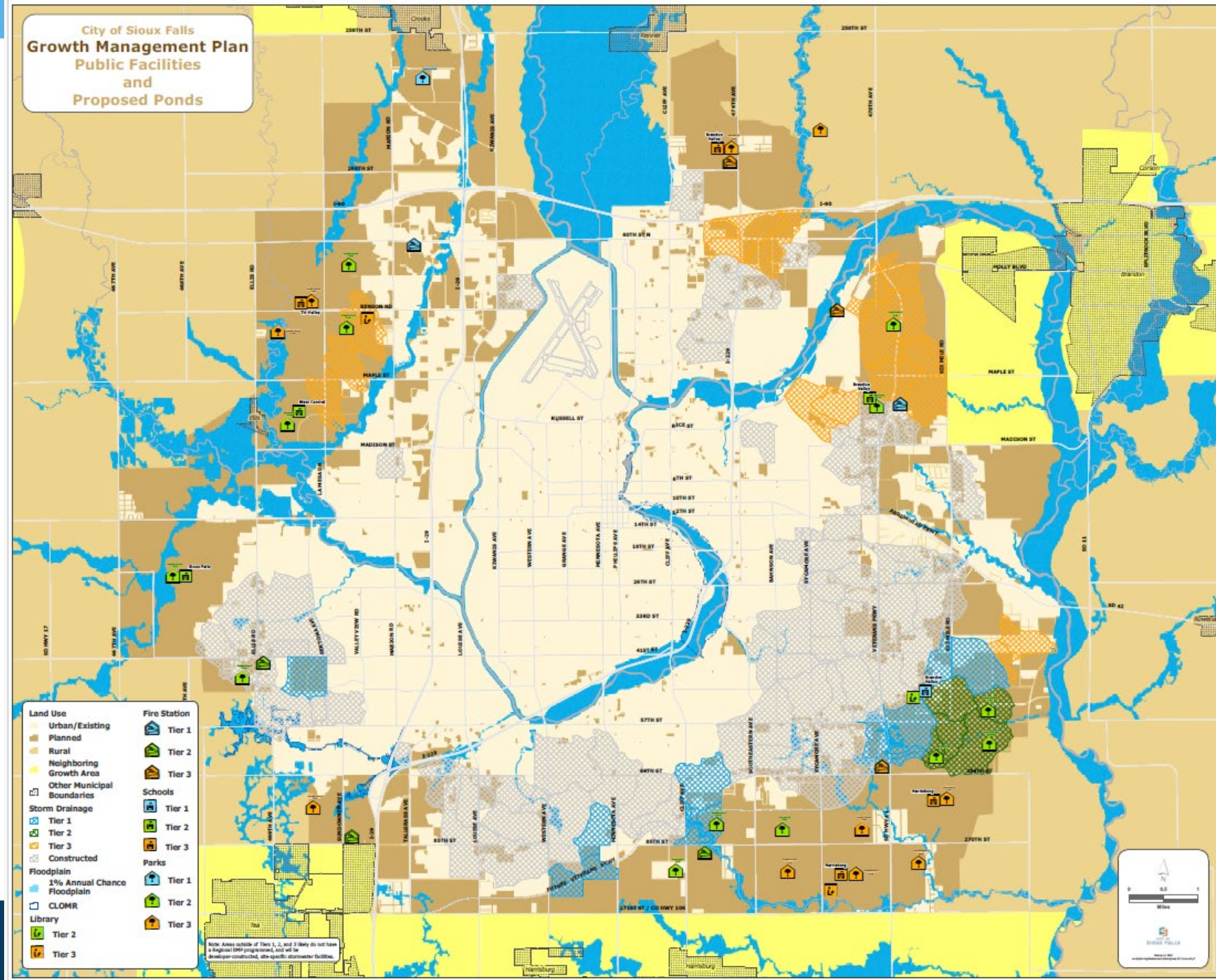
# Tier Maps

- Tier 1: Annexation advised within five years. All City services available within the five-year CIP period.
  - Tier 2: Annexation not advised. City services are projected to be available for development within 6 to 15 years (additional monetary resources needed).
  - Tier 3: Annexation not advised. City services are projected to be available for development within 16 to 25 years (additional monetary resources needed).
- 
- Development Areas – 2A
  - Sanitary – 2B
  - Water\_ Roads – 2C
  - Drainage\_ Public Facilities - 2D





- Drainage basins
- Fire stations
- Parks
- Libraries
- Schools
- Floodplan



# 26.5 years

- Development areas

850 acres/ yr.

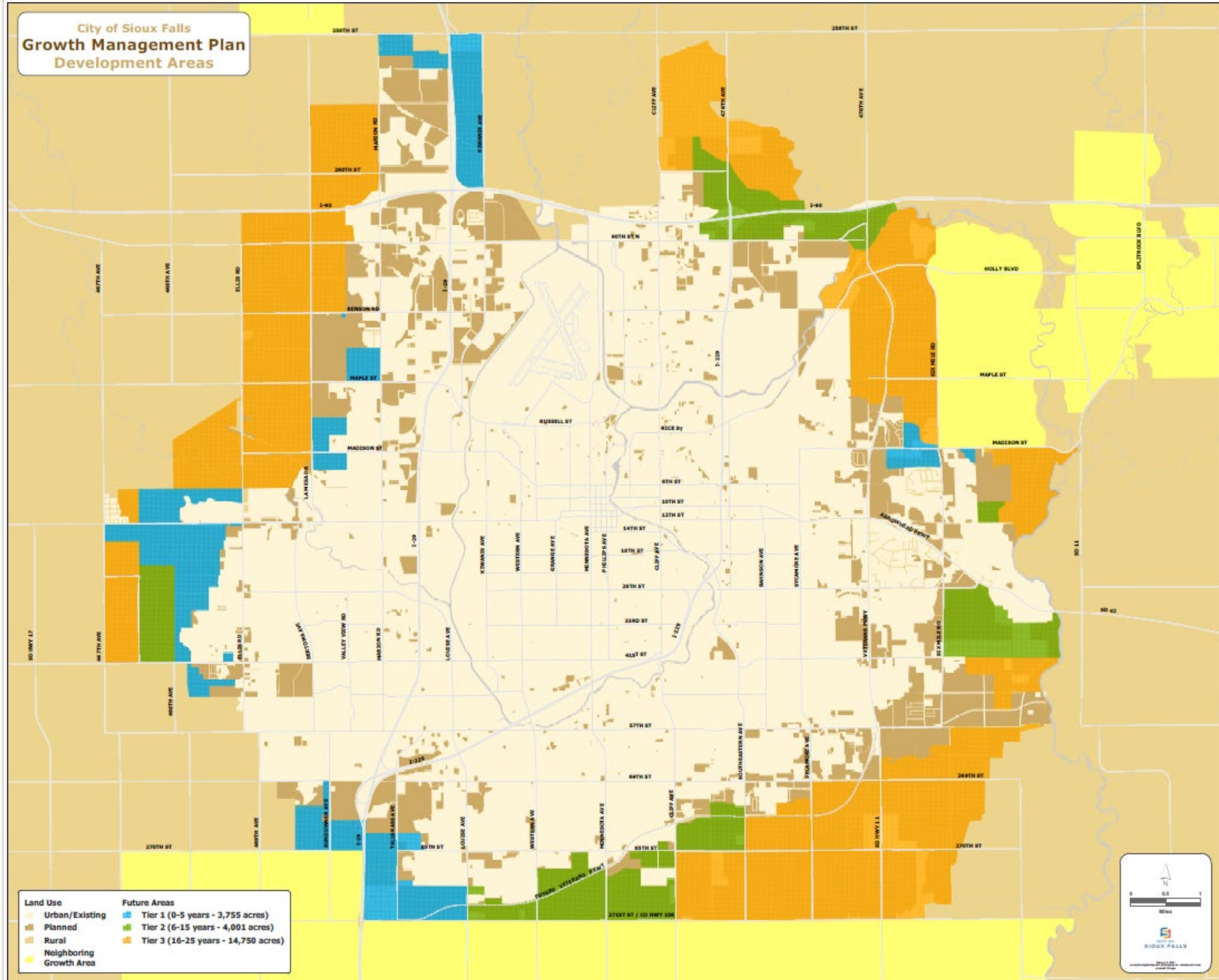
Infill: 4,624

Tier 1: 3,755

Tier 2: 4,001

Tier 3: 14,750

Subtotal: 22,506



# Comprehensive Plan

- Working to get maps approved by City Council in April.
  - Effective by May
  - To be used, available within the September CIP Hearing Process.
- Please meet with Staff for questions, comments, analysis areas.
- Preparing to update Comprehensive Plan throughout next 20 months.