

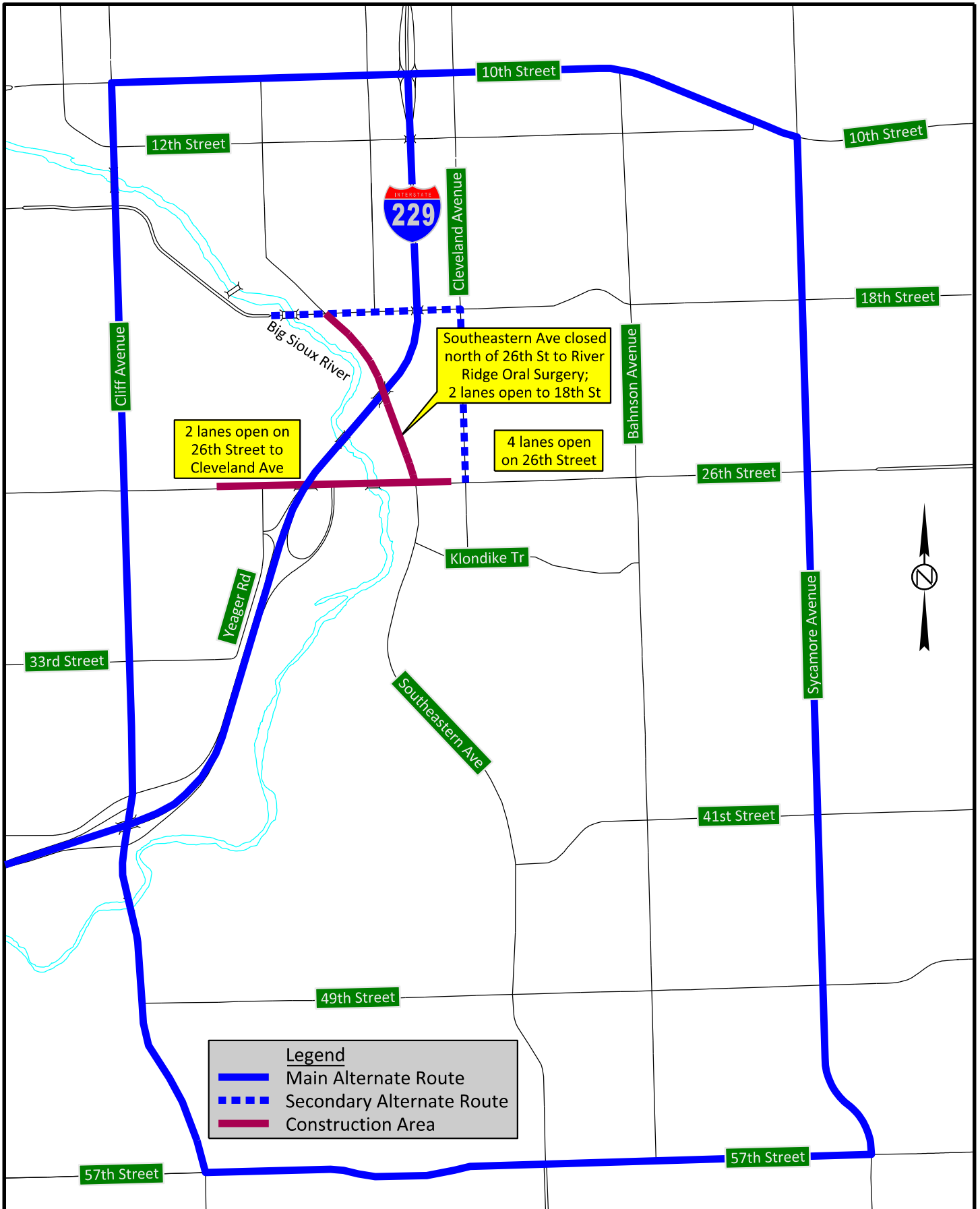
Drawn By: B.Miller
 Date: 3/6/2019
 Chkd By: J.Unruh
 Date: 3/6/2019
 Revision:



Phase 1 (2019) Alternate Traffic Routes

I-229 / 26th Street / Southeastern Avenue Reconstruction

Sioux Falls, SD



2 lanes open on 26th Street to Cleveland Ave

Southeastern Ave closed north of 26th St to River Ridge Oral Surgery; 2 lanes open to 18th St

4 lanes open on 26th Street

Legend	
	Main Alternate Route
	Secondary Alternate Route
	Construction Area

Drawn By: B.Miller
 Date: 3/6/2019
 Chkd By: J.Unruh
 Date: 3/6/2019
 Revision:



Phase 2 (2020) Alternate Traffic Routes

I-229 / 26th Street / Southeastern Avenue Reconstruction

Sioux Falls, SD