

LEGEND

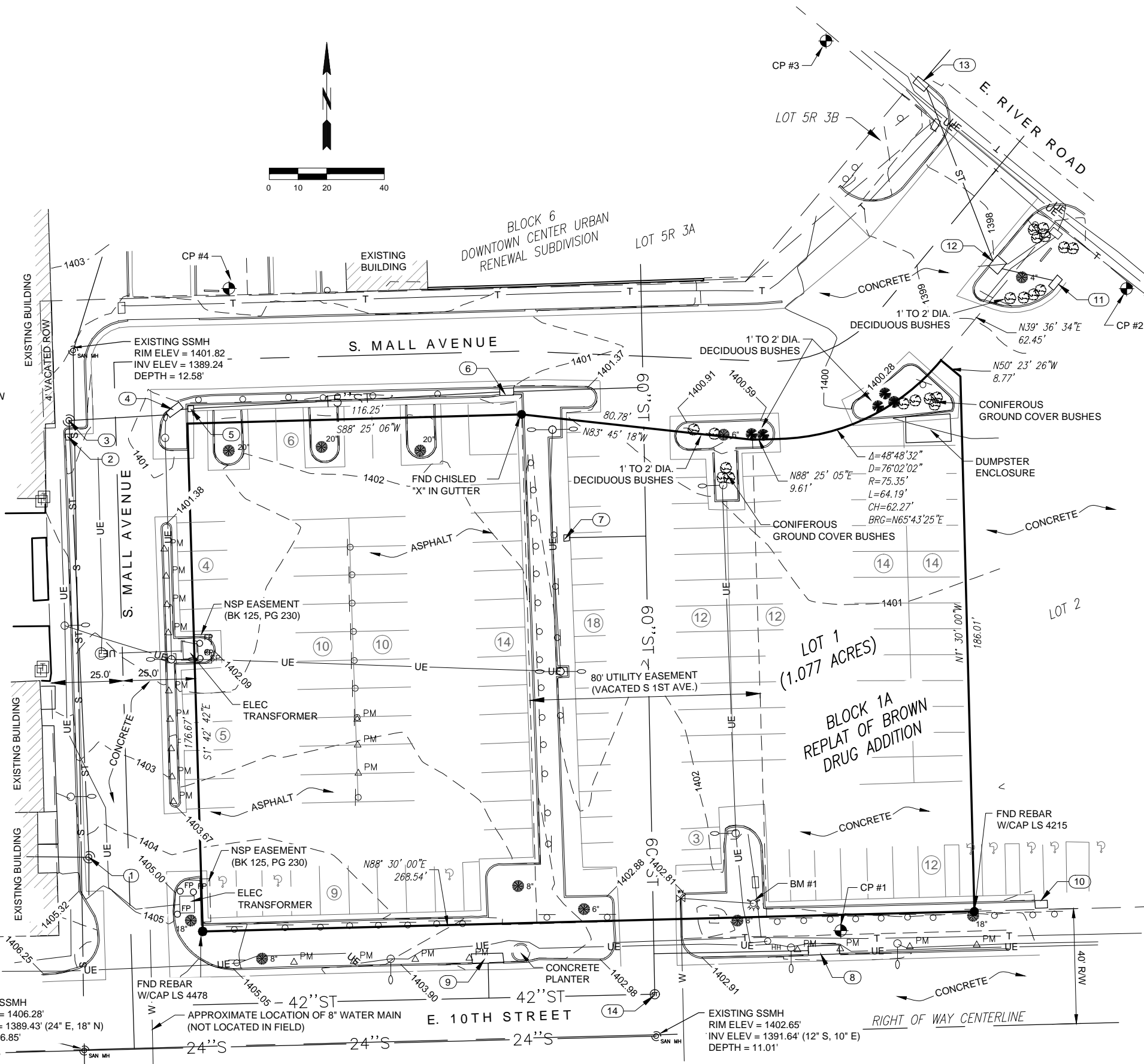
- FOUND SURVEY MONUMENT AS NOTED
- ⊙_{SAN MH} SANITARY MANHOLE
- ⊙ FIRE HYDRANT
- LIGHT POLE
- △_{PM} PARKING METER
- ⊞ TELEPHONE PEDESTAL
- SIGN
- _{FP} FENCE POST/BOLLARD
- ⊙ TREES/BUSHES
- 1402.57 TOP BACK CURB SPOT ELEVATION
- PROPERTY LINE
- - - ADJACENT PROPERTY LINE
- - - EASEMENT LINE
- S — SANITARY SEWER
- WS — WATER LINE
- T — TELEPHONE/FIBER LINE
- UE — UNDERGROUND POWER LINE
- ST — STORM SEWER LINE

SURVEY NOTES

1. THIS SURVEY WAS PERFORMED WITHOUT THE BENEFIT OF A TITLE COMMITMENT.
2. ALL UTILITY LOCATIONS SHOWN WERE DERIVED FROM SD ONE CALL LOCATES AND OBSERVED ABOVE GROUND EVIDENCE. INFRASTRUCTURE DESIGN GROUP, INC. DOES NOT CERTIFY TO THE COMPLETENESS OF THE UTILITY INFORMATION SHOWN.
3. SURVEY WAS PERFORMED ON OR BEFORE FEBRUARY 12, 2015. SITE HAD SNOW COVER IN LANDSCAPE ISLANDS SO ALL LANDSCAPE DETAILS MAY NOT BE SHOWN.

SITE LEGAL DESCRIPTION

LOT 1, BLOCK 1A, REPLAT OF BROWN DRUG ADDITION TO THE CITY OF SIOUX FALLS, MINNEHAHA COUNTY, SOUTH DAKOTA



STORM SEWER STRUCTURES

- ① EXISTING JUNCTION BOX
RIM ELEV = 1404.38
INV ELEV = 1399.47 (N-18"-RCP)
INV ELEV = UNKNOWN (W-4" PVC)
INV ELEV = UNKNOWN (S-4" PVC)
DEPTH = 4.91'
- ② EXISTING 2'x2' CATCH BASIN
RIM ELEV = 1400.75
INV ELEV = 1397.39 (15" RCP)
DEPTH = 3.36'
- ③ EXISTING JUNCTION BOX
RIM ELEV = 1401.44
INV ELEV = 1396.41 (N-12"-PVC)
INV ELEV = 1396.41 (S-15"-RCP)
INV ELEV = 1396.41 (E-15"-RCP)
DEPTH = 5.03'
- ④ EXISTING 2'x3' DROP INLET
TOP CURB = 1401.58
INV ELEV = 1395.78 (15"-PVC)
DEPTH = 5.80'
- ⑤ EXISTING 2'x2' AREA DRAIN
RIM ELEV = 1401.07
INV ELEV = 1398.44 (15" RCP)
DEPTH = 2.63'
- ⑥ EXISTING 2'x3' DROP INLET
TOP CURB = 1401.41'
INV ELEV = 1395.53' (15"-PVC)
DEPTH = 5.88'
- ⑦ EXISTING 2'x2' AREA DRAIN
RIM ELEV = 1401.10'
INV ELEV = 1396.92' (12")
DEPTH = 4.18'
- ⑧ EXISTING 3'x10' DROP INLET
TOP CURB = 1402.26
INV ELEV = 1398.75 (18"-RCP)
DEPTH = 3.51'
- ⑨ EXISTING 3'x10' DROP INLET
TOP CURB = 1403.26
INV ELEV = 1398.57 (15"-RCP)
DEPTH = 4.69'
- ⑩ EXISTING 2'x3' DROP INLET
TOP CURB = 1401.50'
- ⑪ EXISTING 2'x3' DROP INLET
TOP CURB = 1398.75'
INV ELEV = 1395.41' (12")
DEPTH = 3.34'
- ⑫ EXISTING 2'x2' DROP INLET
RIM ELEV = 1398.55'
INV ELEV = 1395.27'
DEPTH = 3.28'
- ⑬ EXISTING 2'x3' DROP INLET
RIM ELEV = 1397.62'
INV ELEV = NO ACCESS
(12" S, 15" E)
- ⑭ STORM MANHOLE
RIM ELEV = 1402.65'
INV = 1391.64' (42" W, 60" N)
DEPTH = 11.01'

S:\2015 Projects\15010 10th St & Mall Ave Parking Lot Survey\Design\CAD\15010-BA-SE.dwg
PLOT DATE: 2/23/2015 11:15 AM Robert Kumar

HORIZONTAL DATUM UTM ZONE 14 NORTH NAD 83 (GEOID 12A) VERTICAL DATUM NAVD 88	BM #1 TOP NUT OF HYDRANT ON NORTH SIDE OF E 10TH ST. AT PARKING LOT ENTRANCE ELEVATION - 1,404.89'	CP #1 #5 REBAR W/ BLUE IDG CP CAP N - 15,826,654.20 E - 2,243,364.63 ELEVATION - 1,402.36'	CP #2 MAG NAIL WITH RIBBON N - 15,826,877.30 E - 2,243,464.16 ELEVATION - 1,398.70'	CP #3 #5 REBAR W/ BLUE IDG CP CAP N - 15,826,963.43 E - 2,243,359.54 ELEVATION - 1,400.23'	CP #4 #5 REBAR W/ BLUE IDG CP CAP N - 15,826,877.37 E - 2,243,151.83 ELEVATION - 1,402.48'
--	---	---	--	---	---

1ST AVENUE LOTS TOPOGRAPHY SURVEY
10TH STREET & MALL AVENUE
SIOUX FALLS, SD

TOPOGRAPHIC SURVEY
DESIGNED BY: Infrastructure
DRAWN BY: Infrastructure
CHECKED BY: BDK
ACAD FILE: X:\2015\BASE.dwg
DATE: FEBRUARY 23, 2015
BY: DATE: DATE:
REVISIONS:

CITY OF SIOUX FALLS
PUBLIC WORKS
Providing a Better Quality of Life for You!



SHEET NO.

C.01